

Today, owners need tools to manage mountains of data and provide critical decision support, all the while helping reduce organizational inefficiency. They also need tools that keep them connected to property managers, brokers, or investors, no matter where their assets are located. Today, owners need AssetEye.

Commercial real estate owners face mountains of asset-related data that must be collected, organized, and analyzed, then shared and reported throughout their organizations. Without effective management tools, these processes can be frustrating at best, time-consuming and expensive at worst. That's why AssetEye created its new and uniquely advanced portfolio/asset management solution for owners, advisors, and asset managers. AssetEye represents the best of a new generation of browser-based software tools, providing sophisticated data warehousing and decision support features in a secure, collaborative environment.

Combining the tremendous power of the Internet with emerging data standards, AssetEye is built from the ground up as the total portfolio management platform. Its highly flexible, easily customizable database captures

asset-related data—valuations, budgets, projections, operating statements, debt, rent roll and expirations—as well as documents, photos, critical dates, contacts, and more. Accessed with a common web browser, AssetEye's

portfolio. Each user's custom homepage puts key information at the fingertips, including alerts, messages, and task list, as well as news, industry press releases, and stock quotes.

Through AssetEye's advanced, personalized alert system, each user can be warned of budget variances, low occupancy, critical dates, loan maturities, and other crucial data points. And with the customizable portfolio navigator, users can drill down through each asset to view or update critical data, create reports and charts, or download important documents.

## EFFICIENCY THROUGH COLLABORATION

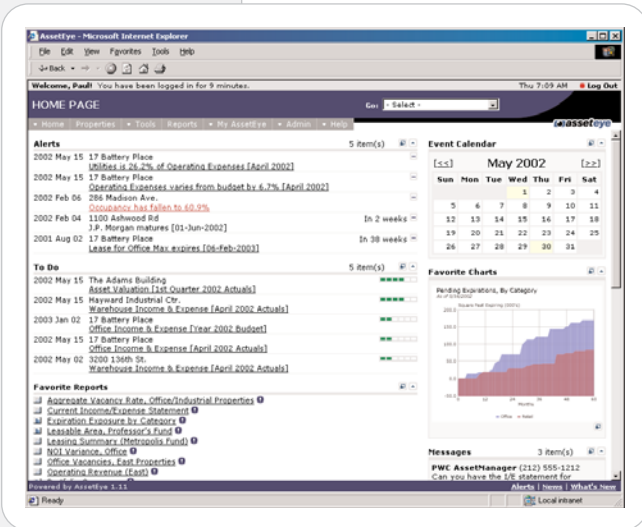
With the AssetEye solution, any organization that participates in the lifecycle of a real estate asset—property managers, owners, investors, brokers, contractors, attorneys, lenders—can securely access all or part of the asset's data, from anywhere in the world.

For example, property managers can enter or upload monthly income/expense statements, asset managers can track loans and occupancy rates, and investors can review quarterly portfolio performance reports. Because information resides in the centralized AssetEye database, everyone sees the same data at the same time—there's never a need to re-key.

To keep control in a multi-user environment, your organization decides who enters, who reviews, and who approves data, and how often. AssetEye's customizable workflow feature insures that data never enters the system without being reviewed and checked.

## EVERY USER PLAYS A ROLE

AssetEye's powerful role-based security model gives your organization complete control over who can view or modify critical data. Your AssetEye administrator can grant access to a portfolio's entire financial history, or to a single photograph, based upon the user's role. AssetEye includes standard roles (such as Property Manager, Leasing Agent, or Investor), but each organization can create its own.



*Your personalized homepage is a window into the portfolio, delivering custom alerts, task lists, and messages, as well as reports, headlines, and stock quotes.*

collaborative, role-based security permits owners and their partners to simultaneously and securely review or update information, and easily prepare custom reports and charts.

## YOUR WINDOW INTO THE PORTFOLIO

AssetEye provides the owner with a wealth of tools to monitor the performance and status of every asset in a

Your administrator also creates and controls AssetEye user accounts for individuals from both inside and outside your organization. Each user's AssetEye sessions can be closely monitored, and their accounts disabled or removed from the system altogether.

## CUSTOMIZATION PUTS YOU IN CONTROL

The AssetEye solution gives your organization the flexibility to store nearly any asset-related information. From property-specific charts of accounts, to custom data fields, to configurable tabs and screens, your AssetEye installation is based on *your* business rules and requirements, not ours.

## YOUR DATA IS ALWAYS YOUR DATA

Although AssetEye includes some of the most powerful reporting and charting modules available, sometimes you may need to include your data in other programs, such as Microsoft®

Excel. With its context-sensitive export feature, AssetEye makes downloading data easy. Nearly every screen has an export button, allowing you to copy the information you see directly to your own computer disk.

## NEW PRODUCT, ESTABLISHED TECHNOLOGY

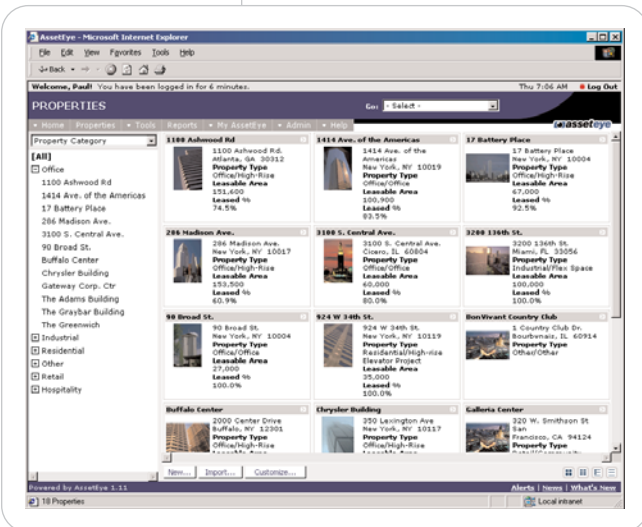
For many software companies, the quickest and cheapest way to create a "web-enabled" product is to wrap Internet technology around an existing product line. The result is often a slow and awkward experience for the user, with systems that suffer the same weaknesses as the original.

AssetEye is an entirely new product, built for the highest performance using Internet technologies and standards. And unlike many proprietary software products, AssetEye is built on Microsoft's powerful web application platform, including .Net™, Windows Server 2003™ and SQL Server 2000™.

Combined with this XML-enabled platform, AssetEye is designed throughout for total XML support. Simply put, an AssetEye solution can share data with any other system that complies with real estate data standards, present or future.

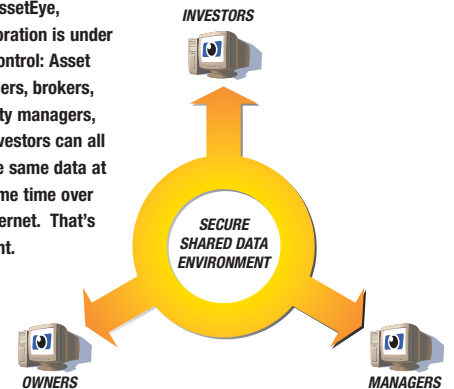
## FEATURES

- Flexible and easily customizable investment and asset data warehouse
- Store historical operating statements, projections, rent roll and leasing data, more
- Instantly compute multi-variable returns: IRRs, NCREIF Property Index, NCREIF Leveraged, more
- Personalized alerts watch variances, occupancy, critical dates, loans, more
- Customizable and powerful reports and charts
- Contact management
- Document and photo warehouse, upload, share, and download
- Role-based security
- Support for emerging XML data standards, like DCN
- All this in an easy-to-use web browser environment!



*The customizable portfolio navigator shows key property statistics, such as occupancy or current NOI. Click to drill down into property financials, documents, contacts, and other critical information.*

With AssetEye, collaboration is under your control: Asset managers, brokers, property managers, and investors can all see the same data at the same time over the Internet. That's efficient.



## GETTING STARTED

Because AssetEye is ASP-hosted, getting started is as easy as using a standard web browser. With an Internet connection and a phone call, your company can be using AssetEye's advanced portfolio management solution today!

If you'd like more information on AssetEye, give us a call at (212) 904-1166, or visit our website.